



Getting Started with your Headset

for Windows Computers

Headset Components

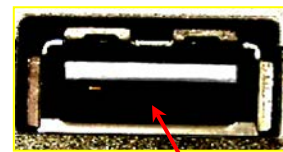
1. Ear phones
2. Microphone
3. USB connector



Plugging the Headset into your Computer

1. Locate a **USB port** on your computer.
Match the solid part of the computer port to the recessed part of the headset's USB connector.
Do not force.
2. Turn on the computer.

USB port



Install your Headset

Once you have plugged in your headset you need to choose it as your speaking (Voice) and listening (Audio) device. If your computer was on when you plugged in your headset you may need to shut down and restart your computer so it will know the headset is plugged in.

1. **Windows 7:**

Click the **Start** button and choose **Control Panel** then **Sounds**.

Windows XP and Window 8:

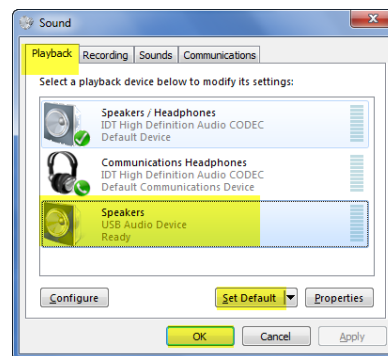
Click the **Start** button then **Settings**, then **Control Panel** then **Sounds** and **Audio Devices**.



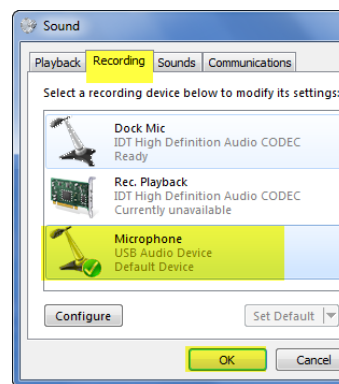
Next you'll choose your headset for listening and recording your voice.

2. **Windows 7 and 8:**

Click the **Playback (listening) tab**, then click your headset to select it as your Default device. Click OK.



Click the **Recording** tab, then click your headset to select it. Click OK.



Important: If you do not see your device in the drop-down list it means it's not properly connecting to your computer. Replug it and try again. You may need to Restart your computer with the headset plugged in.

